



MISSOURI
DEPARTMENT OF
NATURAL RESOURCES

BVCP Program Review

Scott Huckstep

Brownfields/Voluntary Cleanup Program (BVCP)

July 10, 2023

Official Brownfield Definition

Real property, the expansion, redevelopment, or reuse of which may be complicated by the presence or potential presence of a hazardous substance, pollutant, or contaminant. - *USEPA*

What We Offer

- Area-Wide Inventory
- Environmental Site Assessment (ESA)
- ABCA – Analysis of Brownfield Cleanup Alternatives
- Voluntary Cleanup Oversight (BVCP)
- Long-Term Stewardship (LTS)
- ESTART Online Interactive Map

Area-Wide Inventory

- Survey to identify potential brownfields in your community
- Study of a designated area for historical uses that *can* leave contamination
- Not a detailed site-specific assessment of individual properties
- Can be useful for community planning and prioritizing redevelopment resources.
- A way to show your community's potential for redevelopment.

Environmental Site Assessment (ESA)

- Detailed investigation of a property
- Evaluates possible environmental conditions for real estate transactions
- Phase I: A review of records, a site inspection, and interviews with people who have knowledge of the site
- Phase II: Depends on the results of the Phase I. Targeted sampling to confirm the presence/absence of hazardous substances

**Phase I and Phase II Environmental Site Assessment (ESA) Process.
Are there any Recognized Environmental Conditions (RECs)?**

Yes

No

Phase II ESA needed

**Phase II ESA is not
needed**

Contamination:

**Above
Lowest Cleanup Levels**

**Below
Lowest Cleanup Levels**

**Phase II ESA Addendum is
needed or enrollment in the
BVCP is recommended**

**No further investigation is
needed.**

ABCA – Analysis of Brownfield Cleanup Alternatives

- Summarizes site background, assessment findings, applicable regulations, cleanup standards, and project goals
- Evaluates cleanup alternatives for *effectiveness, applicability, and cost*
- Recommends overall best cleanup alternative
- Required by EPA when using grant funds for remediation



Voluntary Cleanup Oversight (BVCP)

- Phase I & II discover contamination or if spill occurred
- Technical assistance and oversight for investigation and cleanup of contaminated properties
- Fee-for-service program
- You choose your consultant and the cleanup method
- Missouri Risk-Based Corrective Action (MRBCA)
- Closure - Certificate of Completion



BVCP Eligibility Exceptions

- Petroleum Storage Tank Insurance Fund (PSTIF) eligible sites
- Hazardous material spill sites while still an emergency
- Superfund sites that are under consideration for or on the National Priority List
- Resource Conservation and Recovery Act (RCRA) Treatment, Storage, and Disposal sites

The application process includes screening by other programs



BVCP Eligibility Requirements

- Owner or other parties may apply
- Owner must allow MDNR access
- Known or suspected contamination
- CERCLA Haz Substances or petroleum



Certificate of Completion

- Key document for reuse/redevelopment
- Summarizes investigation and cleanup
- Cleanup has met standards
- Site is safe for intended uses (as long as any land use restrictions are followed)
- Runs with the land (not the owner)



Long-Term Stewardship

- Any site cleaned up to restricted-use levels (aka non-residential) will have use restrictions
- Ensures safe use of property for as long as contamination remains
- Environmental Covenant according to Missouri Environmental Covenants Act
- Filed in chain of title of property, runs with the land
- Covers land use, maintenance of engineered controls, use of groundwater, etc. as appropriate
- Self-reporting and BVCP audits ensure restrictions are followed
- One-time Monitoring Fee: \$15,000



Missouri Environmental Site Tracking and Research Tool (E-START)



<https://dnr.mo.gov/waste-recycling/long-term-stewardship-lts/environmental-site-tracking-research-tool-e-start>

Missouri E-START



The Missouri Department of Natural Resources' Hazardous Waste Program regulates the management of hazardous waste, oversees the cleanup of contamination, regulates the operation of underground tanks, and oversees removal and cleanup of petroleum storage tanks.

This interactive map allows users to readily access information on site investigations and cleanups, as well as certain regulated sites within a specific community or area. The map contains information about the following types of sites: Superfund sites, Federal Facilities sites, Resource Conservation and Recovery Act Corrective Action sites, Brownfields/Voluntary Cleanup Program sites, Brownfield Assessments, and Petroleum and Hazardous Substance Storage Tank Facilities.

Users may click on a point or area to review a site information summary, and links to important documents from department files are available. Local governments and utilities are encouraged to utilize the downloadable data layers to assist in permitting,

planning and development activities.

Most environmental cleanups are risk-based, which means the site is cleaned up to a level sufficient for its likely future use. Such cleanups may include physical controls, like barriers and caps, or restrictions on future use of the property to prevent exposure to residual contamination. This map is designed to provide information about all clean ups and any related physical controls or property use restrictions. The department's goal in making site information easily accessible is to provide a transparent, consistent information resource that helps ensure property is used safely in Missouri. If additional data is required, the department's files can be reviewed or copied by making a Sunshine Law request. Contact the Custodian of Records at custodianofrecord@dnr.mo.gov or call 573-751-3443 or visit dnr.mo.gov/sunshinerequests.htm for more information.

Although these data sets have been compiled by the department, no warranty, expressed or implied, is made by the department as to the accuracy of the data and related materials. The act of distribution shall not constitute any such warranty, and no responsibility is assumed by the department in the use of these data or related materials.

Any user of this map or related data sets accepts any faults or limitations with the data and agrees to hold the state of Missouri harmless from and against any damage, loss or liability arising from the use of this map or related data sets. By clicking "View Map" or "Download Data," you acknowledge and accept these terms.

[View Map](#)

[Download Data and Reference Guide](#)

[Hazardous Waste Homepage](#)

[Program Home Page](#)

[Businesses, Schools and Public Organizations](#)

[Cleanup](#)

[Data Downloads](#)

[Electronic Recycling](#)

[Guidance and Information](#)

[Hazardous Waste Forum](#)

[Hazardous Waste Management Commission](#)

[Laws and Regulations](#)

[Map Gallery](#)

[Missouri Risk-Based Corrective Action \(MRBCA\)](#)

[Permitting, Certification and Licenses](#)

[Public Participation](#)

[Radioactive Material Shipments](#)

Contact Information

Hazardous Waste Program

P.O. Box 176
Jefferson City, MO 65102

800-361-4827

573-751-3176

[Contact Us](#)

[Report an Environmental Concern](#)



Home Search Full Extent

MAP LAYERS

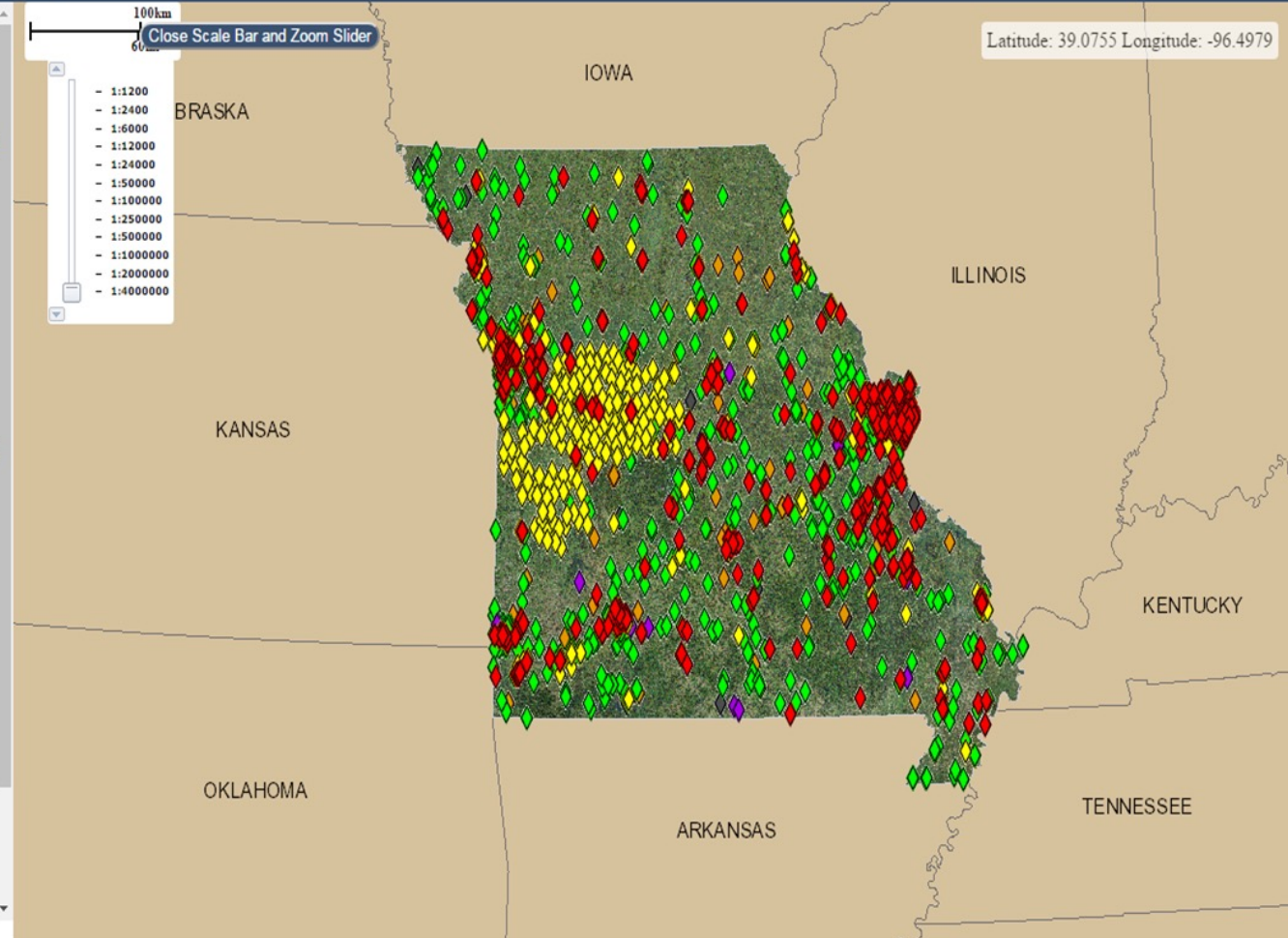
2014 IMAGERY

HAZARDOUS SUBSTANCE INVESTIGATION AND CLEANUP

- Activity and Use Limitation Area
- Site Area
- Active
- Long-Term Stewardship
- Environmental Notice
- Completed
- Brownfield Assessment
- Inactive VCP (Terminated/Withdrawn)

REGULATED PETROLEUM AND HAZARDOUS SUBSTANCE STORAGE TANK FACILITIES

- Activity and Use Limitation Area
- All Operating Underground Storage Tank Facilities
 - Investigation/Corrective Action is Ongoing or Incomplete
 - No Further Action Letter Issued With Restriction
 - No Further Action Letter Issued Prior to 2004 Tanks RBCA
 - No Further Action Letter Issued Without Restriction
 - Operating UST Facilities with No Known Release
 - Administrative Closure
- Former Underground Storage Tank Facilities
 - Investigation/Corrective Action is Ongoing or Incomplete
 - No Further Action Letter Issued With Restriction
 - No Further Action Letter Issued Prior to 2004 Tanks RBCA
 - No Further Action Letter Issued Without Restriction
 - Administrative Closure
- Other Known Petroleum Facilities
 - Investigation/Corrective Action is Ongoing or Incomplete
 - No Further Action Letter Issued With Restriction



Questions?

Scott Huckstep, Chief

Brownfields/Voluntary Cleanup Section

573-522-1597

scott.huckstep@dnr.mo.gov

missouribrownfields.com