



Long-Term Stewardship: A New Player in the Environmental Field

Sonja McDanel

What is Long-Term Stewardship and why do we care?

- There were hundreds of sites that were neglected
- There were no rules to ensure oversight occurred
- No person or department was responsible to provide these services.

Long-Term Stewardship (LTS)

- *Includes all activities necessary to ensure the protection of human health and the environment following the completion of cleanup, disposal, or stabilization at a site, including inspection, maintenance, information management and distribution, and public awareness.*

Long-Term Stewardship Sites

- The site has not been remediated to unrestricted/unlimited use conditions; or
- The site has any limitations as to what activities or uses can occur on the site (Activities and Use Limitations-AUL)

Recordkeeping Sites

- Sites that have been investigated and found to meet, or have been remediated to meet unrestricted/unlimited use levels, and/or have no requirements for monitoring and no restrictions on use,
- No Activities and Use Limitations (AULs) such as environmental covenants in place, and
- No post-closure inspection by DNR's LTS unit or self-reporting requirements were placed on the site owner or responsible party.

Why is long-term stewardship a necessity and not a luxury?

- Improve Land Usage
- Fiscal Responsibility
- Environmental Well-Being

Engineering Controls are Physical Measures put in Place to Prevent Contamination Transport

- Passive Controls – Fences, Caps, Signs, Berms, Rip Rap
- Active Controls – Extraction Systems, Treatment Systems, Air Strippers

Institutional Controls are Administrative or Legal Instruments used to Restrict Land Use or Activities that Can Occur

- Registry Listing
- Environmental Covenant
 - Construction Restrictions
 - No Drilling or Use of Groundwater
 - Non-Residential Use
 - Soil Management Plan



Roys

French Bottom
Access (St.
Joseph)

MacArthur Dr

Roys Branch

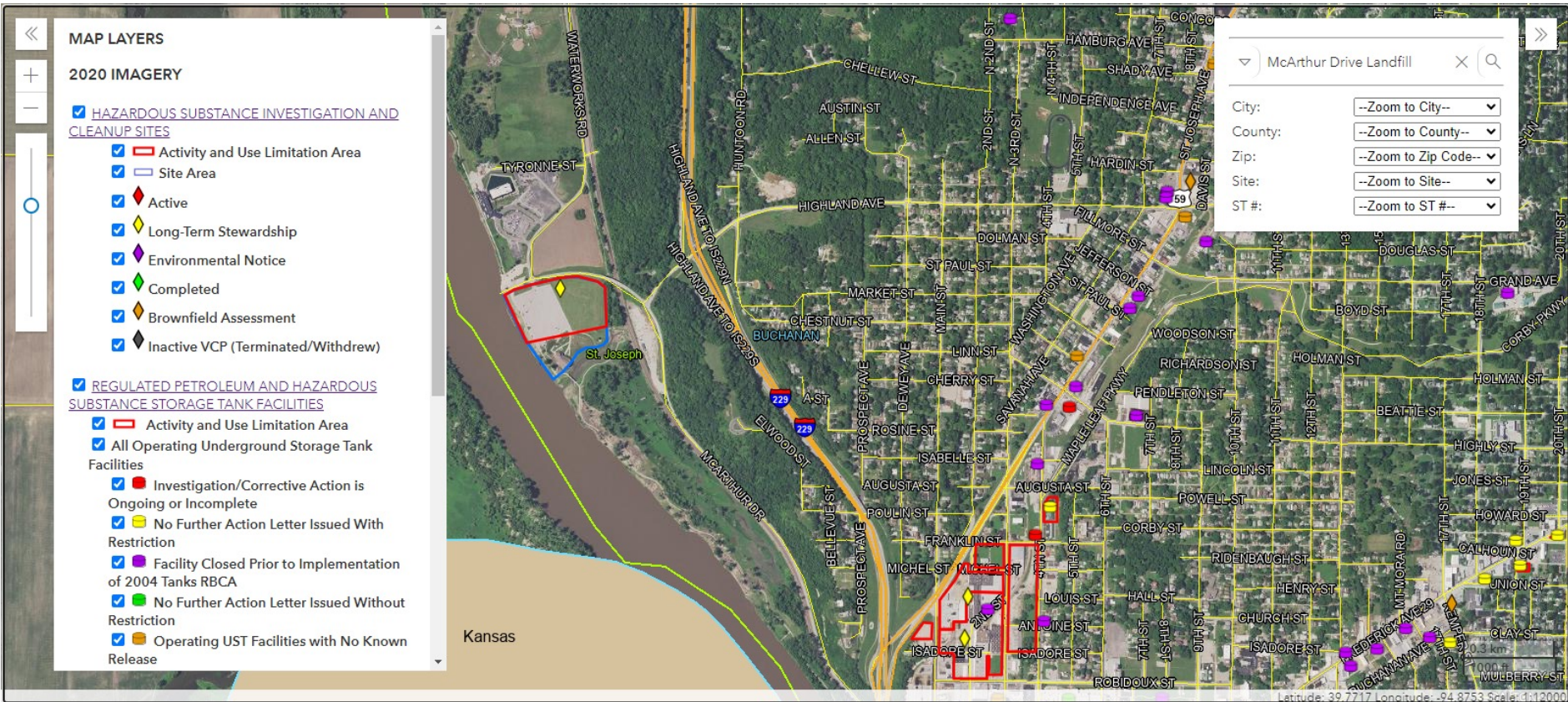
Burlington North

Remington
Nature Center

Missouri River

How can we track these sites and allow the public to access information about them, too?

E-START (Environmental Site Tracking and Research Tool)



Where is Long-Term Stewardship heading?



QUESTIONS?

Thank you for your participation

Sonja.McDanel@dnr.mo.gov

573-751-8393