

Bringing Paint Stewardship to Missouri

MWCC 2023



Missouri Product Stewardship Council

Formed in 2018

Materials prioritized:

- Pharmaceuticals
- Mattresses
- Paint

Workgroups established



Getting Started

- **Data collection state-wide**
- **Boots on the ground: talked with retailers**
- **Developed educational materials**
- **Speaking engagements**

What's our Message?

- **Volume of Leftover Paint in Missouri**
- **Cost to Manage Leftover Paint**
- **Access to Services Lacking in MO**
- **Benefits to Paint Stewardship**

Outreach:

Retailers ~75 visits early 2020

MO Solid Waste Districts

SW District Planners

HHW Program Partners

Missouri Recycling Association

Missouri Municipal League Conference ~ 75 city and
county government representatives

MO Retailers Association

Bridging The Gap

Sierra Club

Green Sheen Paints

Heritage Environmental Services

Tredabe

Richardet Painting

Habitat ReStores



Over **1.3 million gallons** of paint go unused in Missouri each year, enough to paint **52,000 two-story houses**





WHO PAYS?

Local Governments

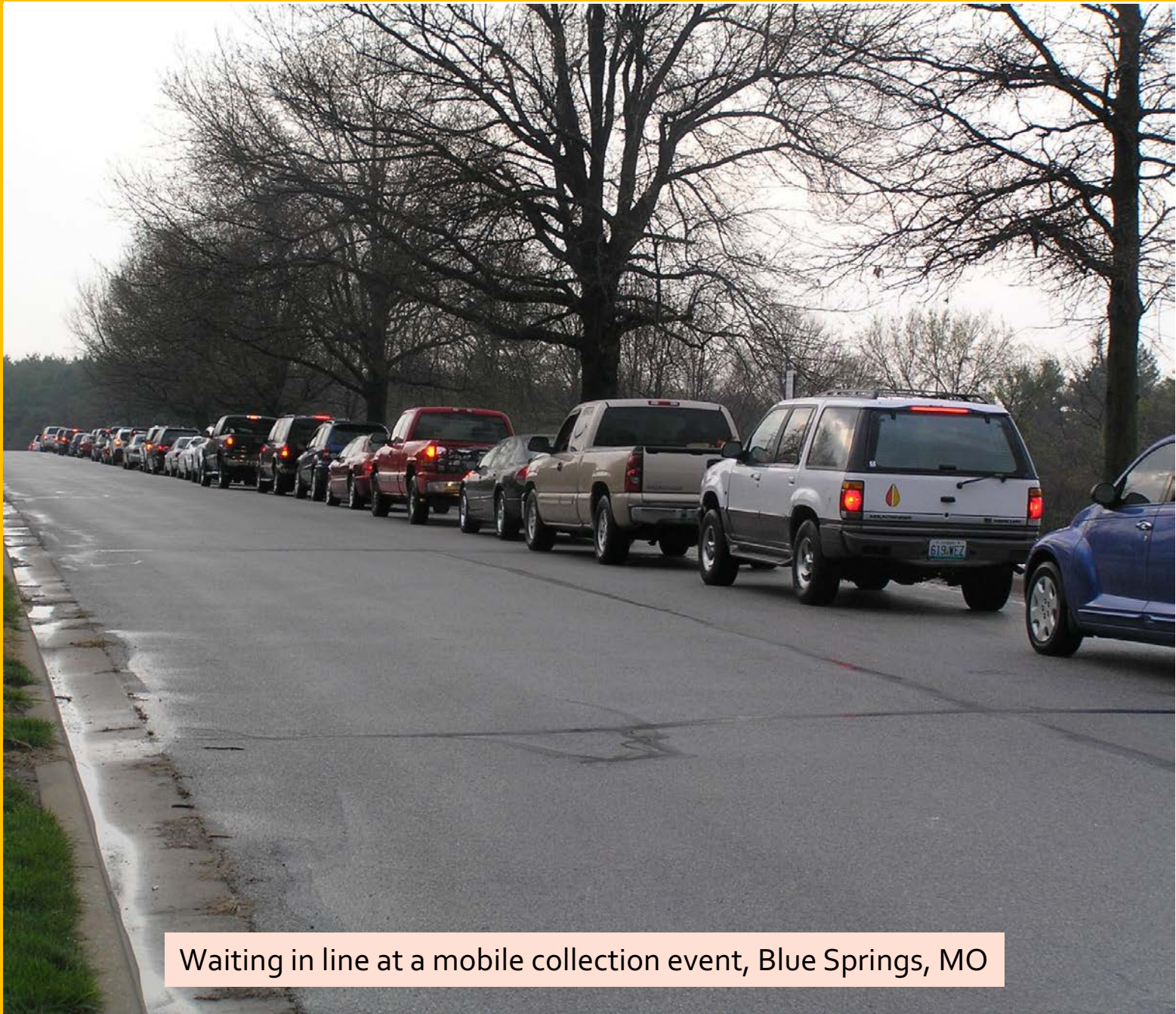
More than 50% of HHW budgets are spent on paint management alone.

Consumers

Some programs require residents to pay to drop off paint

No one

No one pays and left-over paint sits in basements and garages, is illegally dumped, or is thrown in the trash.



Waiting in line at a mobile collection event, Blue Springs, MO

ACCESS TO SERVICES

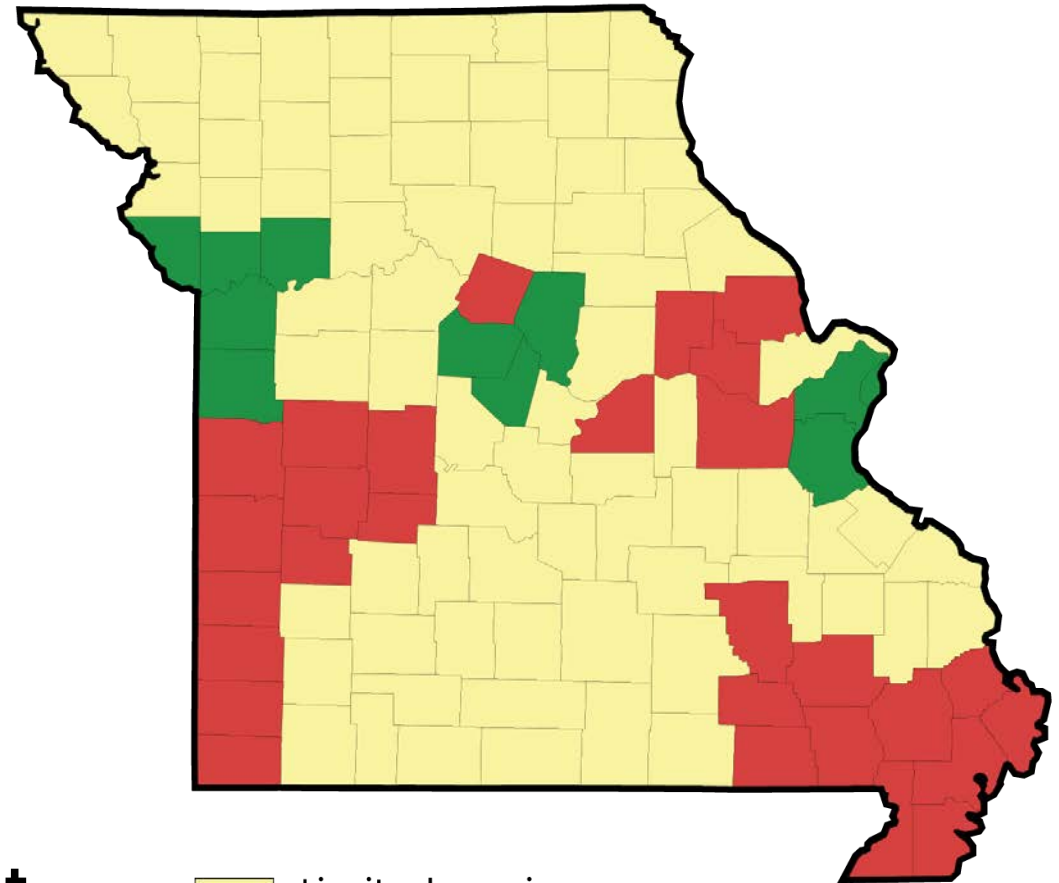
SERVICE

Access to paint disposal services is limited in Missouri.

Drop-off facilities often:

- Have limited hours
- Require appointments
- Do not accept latex paint

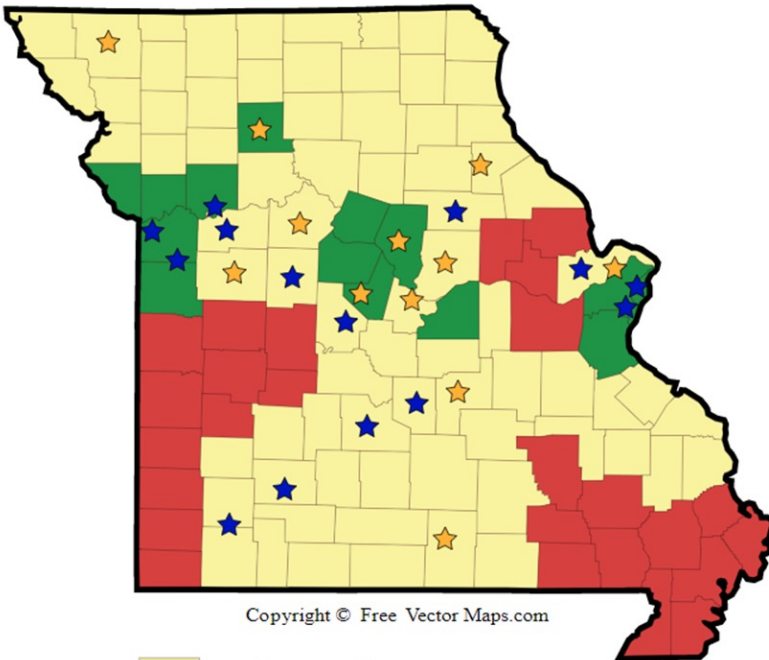
Mobile Collection Events are infrequent and provide a short window of time to drop off material.



Note: All data is up to date as of March 2023

Mapping Convenience

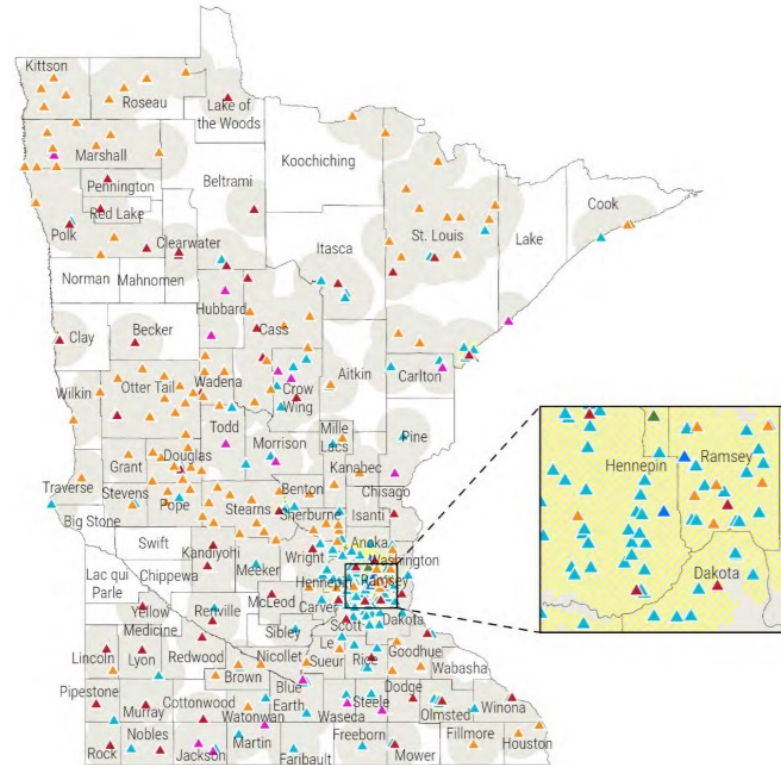
Missouri (left) has **25** paint collection locations; Minnesota (right), which has had PaintCare for 7 years, has **250+** collection locations!



Copyright © Free Vector Maps.com

- Collects oil-based paint only
- Collects oil-based and latex paints
- No paint disposal services
- Permanent HHW Facility
- Seasonal HHW Facility

Note: All data is up to date as of November 2021

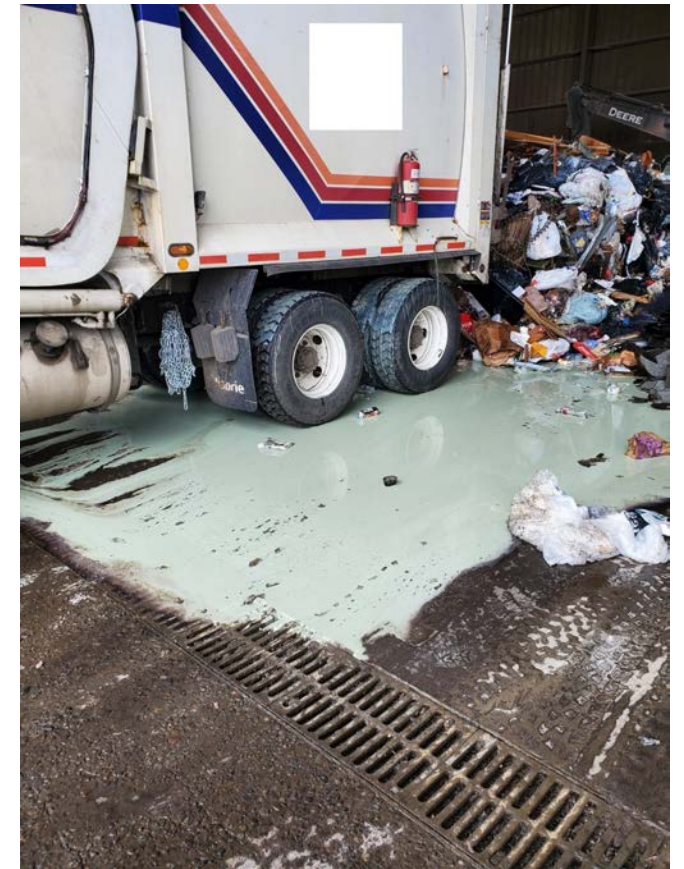


- HHW Event
- HHW Facility
- HHW Seasonal
- Paint Recycler
- Retailer
- Reuse Store
- Transfer Station
- Urbanized Areas & Urban Clusters
- Area Served within 15 Miles

PAINT STEWARDSHIP IS A WIN-WIN

- Increased services for residents and businesses
- Cost savings for local governments
- Less dumping in the environment
- Reliable feedstock for the recycled paint industry
- No more wet-paint disasters for waste disposal industry

Photo courtesy of Washington State Dept. of Ecology





SB 639

Sponsored by Mike Bernskoetter (R)

Passed by the Commerce, Consumer Protection, Energy and the Environment Committee on April 25, 2023

Nadja Karpilow, AICP Environmental Planner III

MARC Solid Waste Management District, Region E
Kansas City, Missouri

karpilow@marc.org

